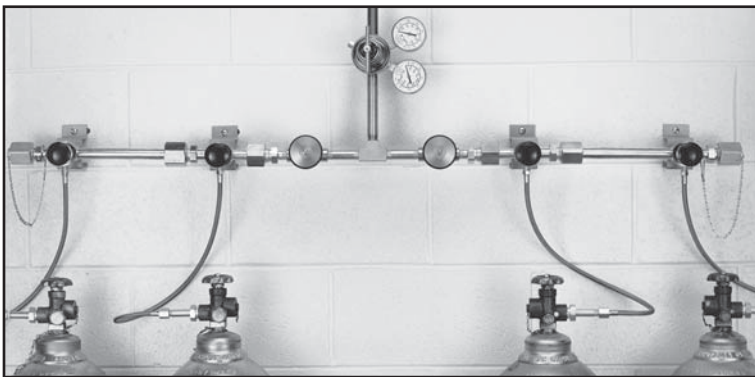


633 Series Duplex HF

Manual Switchover System, High Flow



The 633 Series Duplex supports two banks of high pressure cylinders for applications where continuous gas supply is not required. A heavy-duty valve manually controls the bank priority, and line or station regulators should be installed at the point of use to ensure constant delivery pressure. Use of Acetylene requires flashback arrestor on pigtails.

Advanced Features

- **Manual Switchover**
- **6700 Line Regulator**
High flow capacity
- **Pressure Ranges 0-15 to 0-200 PSIG**
Broad range of applications
- **Integral Maniflex Manifold System**
Easy installation and expansion
- **Left and Right Banks**
Maintain reserve supply

Applications

Pipeline Supply Source

200 PSIG delivery pressure meets NFPA guidelines without compromising flow capacity (15 PSIG maximum for Acetylene)

Fuel Gases

Safely supply acetylene and other fuel gases for cutting, heating or welding with OSHA regulation compliant manifold systems. Use of Acetylene requires flashback arrestor on pigtails. All fuel gases require flashback arrestors.

Materials

Delivery Regulator Body

Brass barstock

Delivery Regulator Bonnet

Forged Brass

Master Valve

Forged Brass

Diaphragm

Fabric-reinforced Neoprene

Internal Seals

PTFE Teflon®

Seat

Viton®

Piping

Forged Brass

Specifications

Maximum Inlet Pressure

3000 PSIG (210 BAR)

Temperature Range

-40 to 140°F (-40 to 60°C)

Maximum Flow

6000 SCFH (2830 lpm)

Outlet Connection

½" FPT

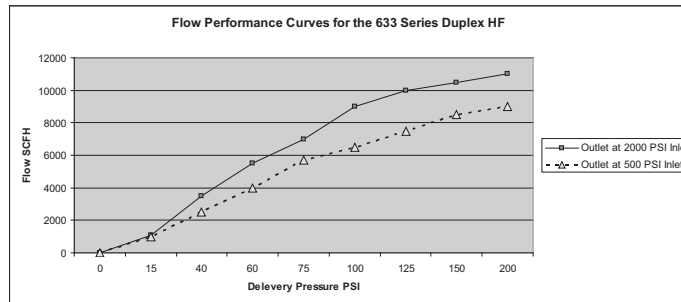
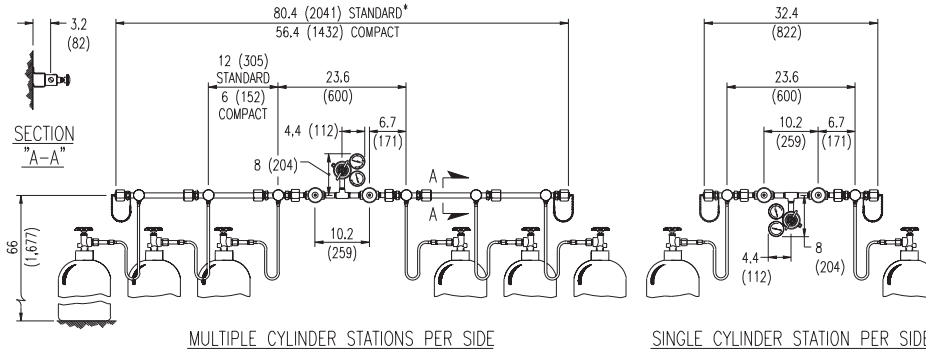
Weight

23 lbs. (10.4 kg)

MANIFOLDS



Mounting and Dimensional Information for the 633 Series Duplex HF



Ordering Information

A	B	C	D	E	F
Series Outlet Pressure	Manifold Style	Pigtail Style	Stations/side	Inlet	Options
633				PTFE-lined pigtails for oxygen service include accumulator extensions to prevent ignition from adiabatic compression. Not for use with Helium or Hydrogen.	C: Foreign Inlets CO ₂ & Inert F: Arrestor for 300, 410, 510 R: Foreign Inlets Ar, H ₂ , O ₂ , O ₂ Mix ²
1: 0-15 PSIG	1: Standard Length (12" between stations) with One Cylinder/Station		1: One Station		
2: 0-40 PSIG		2: 24" Rigid Copper	2: Two Stations		
3: 0-120 PSIG	3: Standard Length (12" between stations) with 2 Cylinders/Station	3: 72" Flexible Stainless Steel Armor Case with Stainless Steel Core	3: Three Stations		
4: 0-200 PSIG	4: Compact Length (6" between stations) with One Cylinder/Station	4: 24" Flexible Stainless Steel braided with PTFE lining	4: Four Stations		
5: 0-15 PSIG (Redline)		5: 36" Flexible Stainless Steel Armor Case with Stainless Steel Core	5: Five Stations		
	6: Compact Length (6" between stations) with 2 Cylinders/Station	6: 36" Flexible Stainless Steel braided with PTFE lining	6: Six Stations		
		7: 24" Flexible Stainless Steel Armor Case with Stainless Steel Core	7: Seven Stations		
		8: 36" Rigid Brass with Flash Arrestor (CGA 300 & 510 Acetylene only)	8: Eight Stations		
		9: 72" Flexible Stainless Steel-braided with PTFE lining	9: Nine Stations		

Related Options

Option	Order Number	Description
Manifold Floor Stand	830-7437	Supports 2 standard length (12") manifold extensions installed consecutively
Station Regulators	See page 40	Precise pressure delivery at the point of use
Flashback Arrestors	801-8530	Use of Acetylene requires flashback arrestors on pigtails. Meets OSHA and NFPA Std. 51 requirements and complies with ISO 5175 (heavy class) DIN 8521, and BS 6158. See pg. 44.